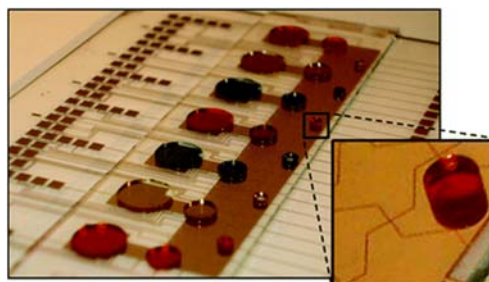
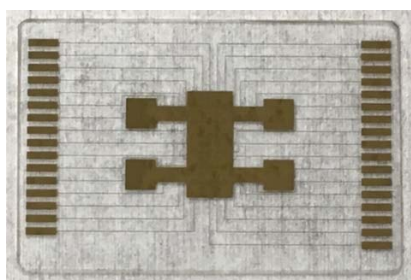
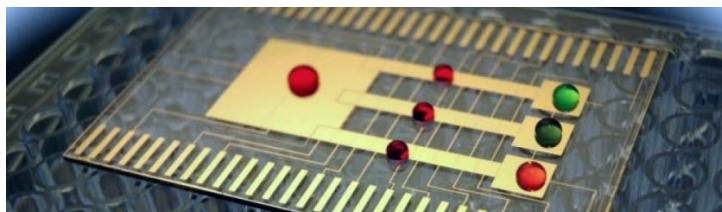


# TELIC

## Digital Microfluidic Chips



---

### SUBSTRATE

#### SPECIFICATIONS

SIZES: 2"x3".040"

GLASS: Soda Lime

SURFACE: All plates are polished on both sides to ensure optimal surface quality

---

### COATING

#### SPECIFICATIONS

COATING: Vacuum Deposited, DC Sputtered in Class 100 Environment

\*Chrome

THICKNESS: 1000Å

UNIFORMITY:  $\pm 25\text{\AA}$

---

### IMAGING

Customer Supplied Data Available down to 10 microns feature size

---

---

28478 Westinghouse Place  
Valencia, CA 91355, USA  
E: [sales@teliccompany.com](mailto:sales@teliccompany.com)

[www.teliccompany.com](http://www.teliccompany.com)

T: 661.702.8603  
TF: 888.TelicCo  
F: 661.257.6802